

NA-VIEW

FOSHAN NAVIEW NEW BUILDING MATERIALS CO., LTD.
WhatsApp/Tel/WeChat: +86-13724959460

NAVIEW Windows & Doors System



Company Profile

Foshan Naview New Building Materials Co., Ltd. established in 2005, is a large-scale enterprise, which integrates research & development, manufacturing and marketing for aluminium profile extrusions, specialized in manufacturing architectural, decorative and industrial aluminium extrusions. Meanwhile, being the leader of Chinese processing industry, Naview has chaired and participated in the drafting of many National & Industry Standards.

Naview factory covers more than 600,000 square meters, equipped with anodizing vertical line, powder coating vertical painting line, 5000T pressing machine, automatic vertical warehouse equipment, etc.

Take "build the first-class and world-famous brand" as the goal, "integrity, diligence, unity, innovation" as the new spirit, Naview determines to create a new pattern of aluminium industry superior product quality, excellent service and dedicate to provide global customers with specialized services.

Product Catalog

NAWD125 Integrated Thermal Break Window With Mesh Series	P01	NAWD120 High-Pressure Sealing Sliding Window Series	P19
NAWD-A-108 Integrated Thermal Break Window With Mesh Series	P03	NAWD-A-80 Heat Insulated Inverted Sliding Window Series	P21
NAWD80/128 Heat Insulated Inverted Sliding Window Series	P05	NAWD50 Narrow Frame Folding Window Series	P23
NAWD75 Thermal Break Narrow Frame Casement Window Series	P07	NAWD68 Narrow Frame Folding Door Series	P25
NAWD77 Thermal Break Casement Window Series	P09	NAWD-B-80 Thermal Break Folding Door Series	P27
NAWD85 Integrated Thermal Break Window With Mesh Series	P11	NAWD115 Extra Narrow Frame Sliding Door Series	P29
NAWD100 Integrated Thermal Break Window With Mesh Series	P13	NAWD143 Narrow Frame Lifting Sliding Door Series	P31
NAWD-B-108 Integrated Thermal Break Narrow Frame Window Mesh Series	P15	NAWD184 Panoramic Sliding Door Series	P33
NAWD138 Integrated Thermal Break Window With Mesh Series	P17	Configuration Hardware & Colour List	P35



Multiple Sound Insulation

Extraordinary sound insulation effect brings comfort and privacy, by multiple sound insulation.



High-strength Profile

With high-strength profile and insulation, shaking and wind whistling noise can be minimized even when typhoon comes.



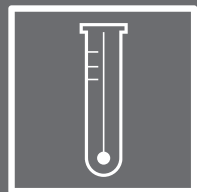
Extra Air Tightness

Using multiple hard and soft co-extruded rubber strip, blocking unwanted air from coming in.



Outstanding Water Tightness

All NAVIEW products apply leading water-tight tech and drainage, allowing them to be water-tight even during thunder storm or hurricane.



Stable Thermal Insulation

Over 37% of thermal energy exchange between indoor and outdoor goes through window, NAVIEW window' s stable thermal insulation helps to reduce our carbon footprint.



Security and Theft-proof

High-strength multi-point locking ensure theft can hardly steal.

Product Features

NAVIEW focuses on products competitiveness like sound insulation, thermal insulation, water tightness, air tightness, resistance to wind pressure, and theft prevention, outperforming other rivals.

Sound Insulation	Resistance to Wind	Air Tightness	Water Tightness	Thermal Insulation	Theft Prevention
★★★★★	★★★★★	★★★★★	★★★★★	★★★★★	★★★★★
★★★★☆	★★★★☆	★★★★☆	★★★★☆	★★★★☆	★★★★☆



NAWD125

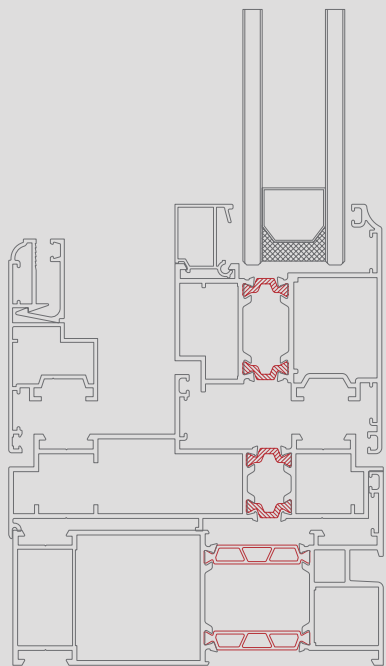
Integrated Thermal Break Window With Mesh Series



PRODUCT FEATURES

- The width of the outer frame is 125mm, T = 1.6mm, using 35.3mm PA66 high-strength nylon heat insulation strip.
- Glass spacer with 40mm, can be equipped with built-in louver, triple pine, etc. Can improve thermal insulation performance, fixed pressure line adopts imitation curtain wall with captivating appearance.
- The outer frame uses hidden drains to form a isobaric cavity, pushing the drainage of rainwater, and enhance the water tightness.
- It can be opened both inwards or outwards, with the appearance of internal and external flat frames. The mesh is stainless steel, and a safety grille can be added for more effective protection.
- The hardware accessories apply ENs window notch, wider range of versatility, and larger target market.

PRODUCT STRUCTURE



PRODUCT PARAMETERS

Aluminum Profile Specification	Exterior Frame Height 65.4mm	Exterior Frame Width 125mm
	Window Sash Height 84mm	Window Sash Width 69.8mm
Wall Thickness	Exterior Frame 1.6mm	Window Sash 1.6mm
Material Characteristic	14.9Kg/m ²	
Standard Glass	5mm+27A+5mm	
Opening Pattern	Glazing Sash Open Outwards Mesh Open Inwards, Glazing Sash Open Inwards Mesh Open Outwards	

L6

sound insulation

L9

resistance to wind

L8

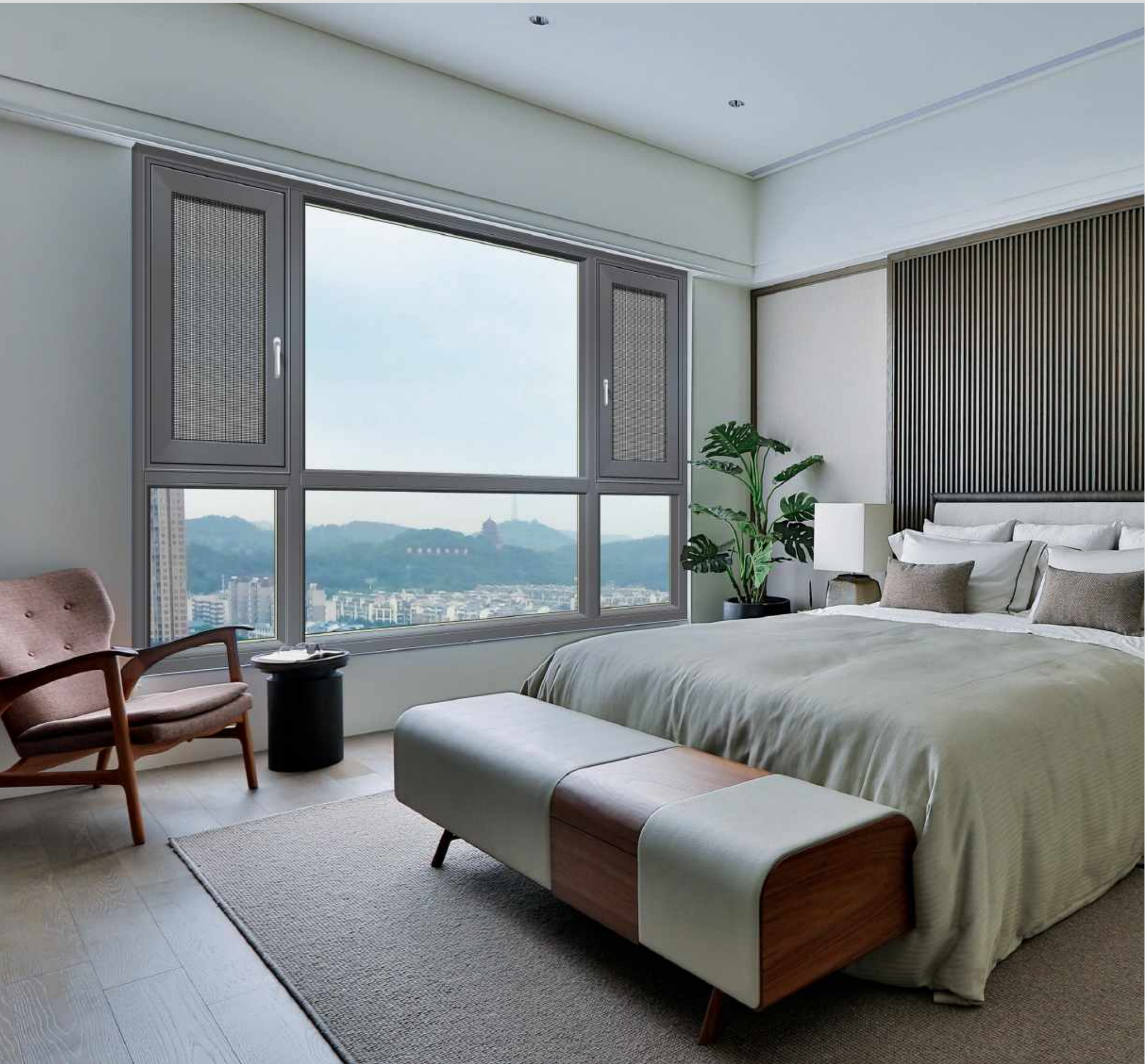
air tightness

L6

water tightness

L6

thermal insulation



NAWD-A-108

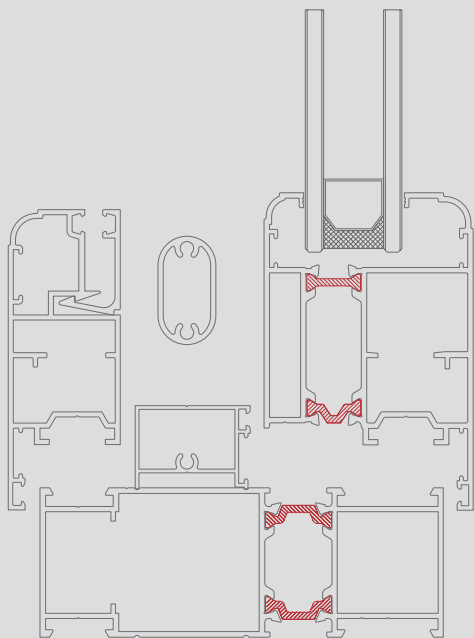
Integrated Thermal Break Window With Mesh Series



PRODUCT FEATURES

- The width of the exterior frame is 108mm, using 18mm PA66 high-strength nylon heat insulation strip.
- Exterior frame and middle pillar using the same aluminum profile, easy for installation, can be widely used for different purposes. Internal frame and mesh are also used in series 86, 126.
- Glass open outwards, mesh open inwards. Glass spacer with 33mm, can be equipped with hollow glass, stainless steel mesh and safety grille.
- Outer Frame and Sash are connected with lift-off joint, easy to install, aligning outer frame and sash.
- The hardware accessories apply ENs window notch, wider range of versatility, and larger target market.

PRODUCT STRUCTURE



PRODUCT PARAMETERS

Aluminum Profile Specification	Exterior Frame Height 40mm	Exterior Frame Width 108mm
	Window Sash Height 80mm	Window Sash Width 48mm
Wall Thickness	Exterior Frame 1.5mm	Window Sash 1.4mm
Material Characteristic	11.8Kg/m ²	
Standard Glass	5mm+20A+5mm	
Opening Pattern	Glazing Sash Open Outwards Mesh Open Inwards, Glazing Sash Open Inwards Mesh Open Outwards	

L5

sound insulation

L9

resistance to wind

L8

air tightness

L6

water tightness

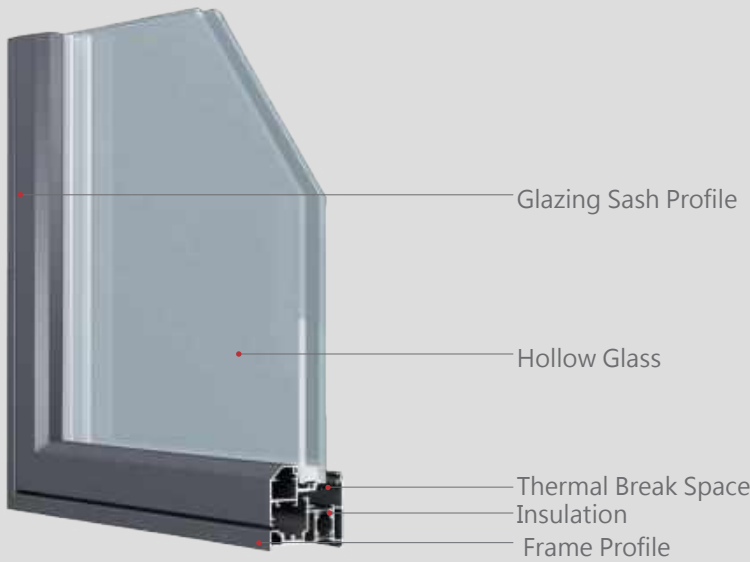
L6

thermal insulation



NAWD80/128

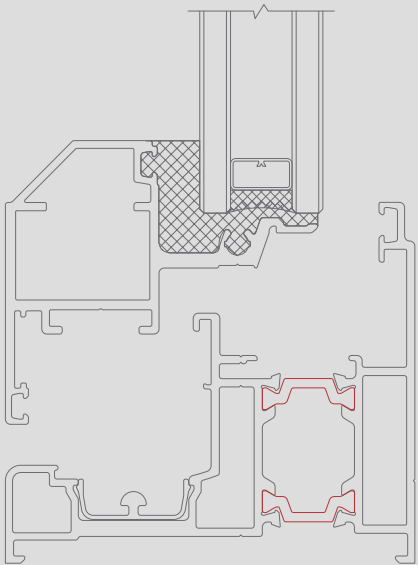
Heat Insulated Inverted Sliding Window Series



PRODUCT FEATURES

- Inner inverted window is a new opening pattern, can meet requirements like inner flat opening, inner open inner inverted, inner inverted moving, inner inverted.
- The monorail is stably opened by sliding, the frame and sash will be flat when closed, the concealing function is more competitive to the normal casement system.
- The window sash has a large opening area meanwhile occupy fewer indoor space. The hidden sash structure makes it close to the appearance of the exposed frame curtain wall with neat built-in hidden hardware.
- Equipped with casement stainless steel mesh, which is anti-mosquitoes, rats and ants, enhanced protection function, inwards assembly, safe to install.
- The structural performance passed the high detection national standard, which can fit various high standard building needs.

PRODUCT STRUCTURE



PRODUCT PARAMETERS

Aluminum Profile Specification	Exterior Frame Height 70mm	Exterior Frame Width 80mm
	Window Sash Height 55mm	Window Sash Width 61mm
Wall Thickness	Exterior Frame 1.6mm	Window Sash 1.8mm
Material Characteristic	80:10.3Kg/m ² 128:14.3Kg/m ²	
Standard Glass	5mm+25A+5mm	
Opening Pattern	Glazing Sash Open Outwards Mesh Open Inwards, Glazing Sash Open Inwards Mesh Open Outwards	

L5

sound insulation

L8

resistance to wind

L8

air tightness

L5

water tightness

L5

thermal insulation



NAWD75

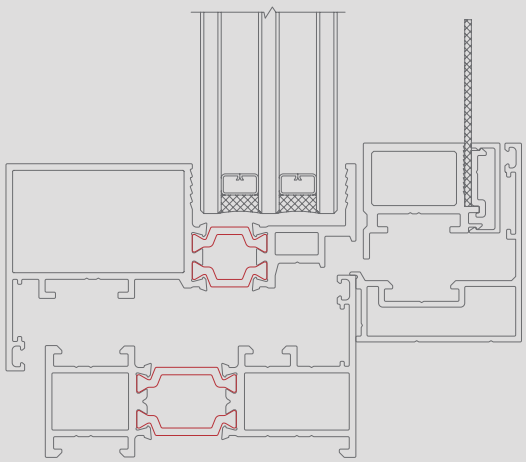
Thermal Break Narrow Frame Casement Window Series



PRODUCT FEATURES

- The width of the outer frame is 75mm, using 24mm PA66 high-strength nylon heat insulation strip.
- It can be opened both double internal or internal external method, with the hidden handle, the whole window set will not see hardware from the surface.
- Glass spacer with 37mm, can be equipped with built-in louver, triple pine, etc. Can improve thermal insulation performance. Stainless steel mesh help keeping mosquito away.
- The visible section of the glass sash is 50mm, and the visible section of the stainless steel mesh is 28mm. The lift-off joint connection is used to ensure strength and safety. The production is simple while reducing the material usage, enlarging the visible area and increasing usage of daylight.
- Hardware accessories use Haobo brand, safe, reliable and durable.

PRODUCT STRUCTURE



PRODUCT PARAMETERS

Aluminum Profile Specification	Exterior Frame Height 44mm	Exterior Frame Width 75mm
	Window Sash Height 50mm	Window Sash Width 84mm
Wall Thickness	Exterior Frame 1.6mm	Window Sash 1.6mm
Material Characteristic	10.1Kg/m ²	
Standard Glass	6mm+20A+6mm	
Opening Pattern	Glazing Sash Open Outwards Mesh Open Inwards, Glazing Sash Open Inwards Mesh Open Inwards	

L6

sound insulation

L9

resistance to wind

L8

air tightness

L6

water tightness

L6

thermal insulation

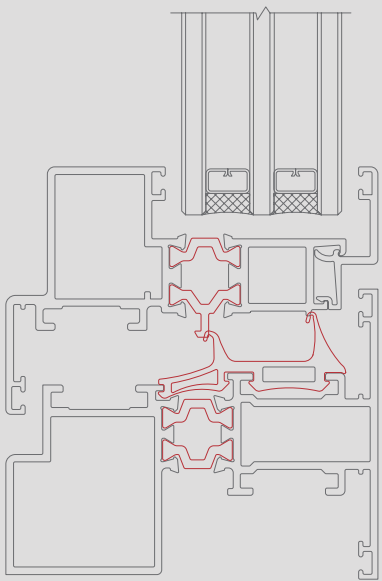


NAWD77

Thermal Break Casement Window Series



PRODUCT STRUCTURE



PRODUCT FEATURES

- The width of outer frame is designed to be 77cm, with 14.8mm PA44 high-strength nylon hear insulation strip.
- Inner visible sash surface is 52mm, while outer is 22mm, connected by corner joint. This simple method minimize the sash and enlarge the visible area, improve the lighting efficiency.
- Opening pattern could be inward, downward and outward.
- Sash and outer frame will be made from the same profile with outward pattern, easy and convenient for production.
- The glass option 42mm, sash and frame appear to be straight and pretty.
- With Kaisenberg hardware, safe, reliable and durable.

PRODUCT PARAMETERS

Aluminum Profile Specification	Exterior Frame Height 60.5mm	Exterior Frame Width 77mm
	Window Sash Height 51.6mm	Window Sash Width 77mm
Wall Thickness	Exterior Frame 1.6mm	Window Sash 1.6mm
Material Characteristic	8.9Kg/m ²	
Standard Glass	5mm+27A+5mm	
Opening Pattern	Inward, Inward Downward, Outward	

L6

sound insulation

L9

resistance to wind

L8

air tightness

L6

water tightness

L5

thermal insulation



NAWD85

Integrated Thermal Break Window With Mesh Series

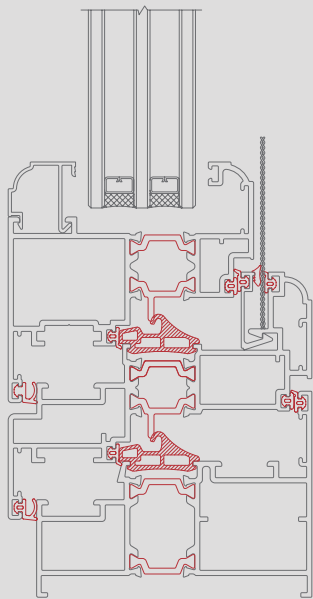


PRODUCT FEATURES

- The width of outer frame is designed to be 77cm, with 14.8mm PA44 high-strength nylon hear insulation strip.
- Opening pattern could be double inward and inward+outward; The double inward opening uses double linkage structure, screen and sash could be opened together or separately by one handle, simple and convenient.
- Using stainless steel screen, glass option 45mm, louver equipped possible, pretty appearance with curved line design.
- Outer frame and sash are connected by corner joint, the central mullion is jointed by a coupler, convenient in process.
- With Kaisenberg hardware, safe, reliable and durable.



PRODUCT STRUCTURE



PRODUCT PARAMETERS

Aluminum Profile Specification	Exterior Frame Height 63.6mm	Exterior Frame Width 85mm
	Window Sash Height 74.4mm	Window Sash Width 75.8mm
Wall Thickness	Exterior Frame 1.6mm	Window Sash 1.6mm
Material Characteristic	12.0Kg/m ²	
Standard Glass	5mm+27A+5mm	
Opening Pattern	Sash Inward, Screen Inward Sash Inward, Screen Outward	

L6

sound insulation

L9

resistance to wind

L8

air tightness

L6

water tightness

L7

thermal insulation



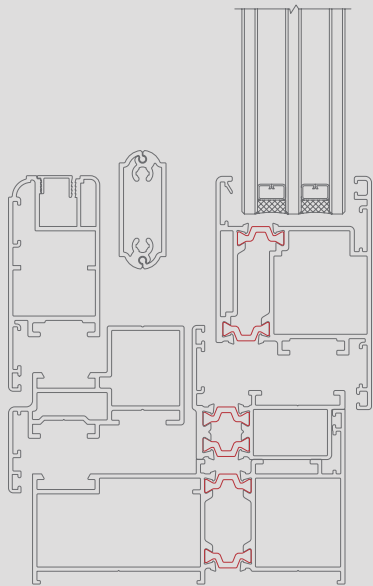
NAWD100

Integrated Thermal Break Window With Mesh Series



- PRODUCT FEATURES
- The width of outer frame is designed to be 100cm, with 14.8mm PA44 high-strength nylon hear insulation strip.
 - Glass option 39mm, to improve the heat insulation and warm keeping function, it is possible to equipped with louver, triple glazing and so on. Curtain wall panel appearance crimping line, splicing with a 45 ° corner joint then withhold, gives a pretty shape.
 - Combined glazing sash, screen and protective grid as one, sunken thin base handle, protective grid open-able, providing a safe home.
 - The spacer between screen and glazing sash is 37mm, large handle available. The screen can be opened inward separately at the 180° , save some room.
 - With Kaisenberg hardware, safe, reliable and durable.

PRODUCT STRUCTURE



PRODUCT PARAMETERS

Aluminum Profile Specification	Exterior Frame Height 56mm	Exterior Frame Width 100mm
	Window Sash Height 74.8mm	Window Sash Width 49.7mm
Wall Thickness	Exterior Frame 1.35mm	Window Sash 1.4mm
Material Characteristic	12.8 Kg/m ²	
Standard Glass	5mm+25A+5mm	
Opening Pattern	Glazing Sash Outward, Screen Inward, Protective Grid Inward	

L6

sound insulation

L9

resistance to wind

L8

air tightness

L6

water tightness

L5

thermal insulation



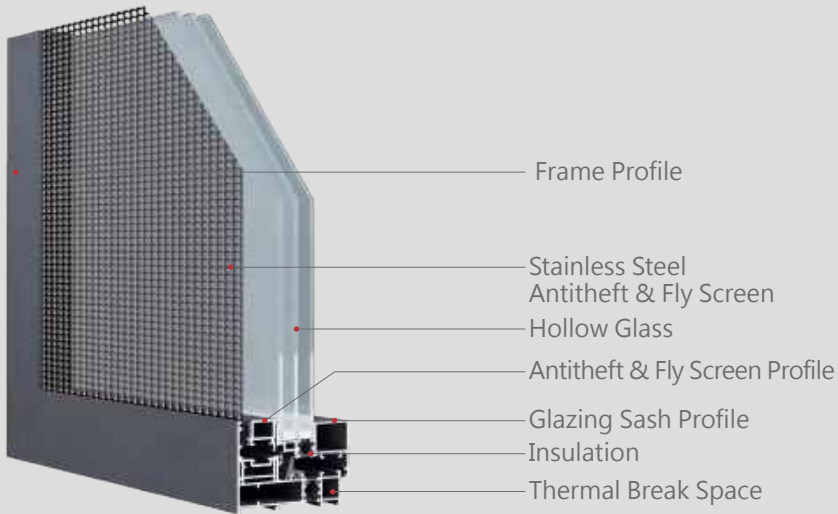
NAWD-B-108

Integrated Thermal Break Narrow Frame Window Mesh Series

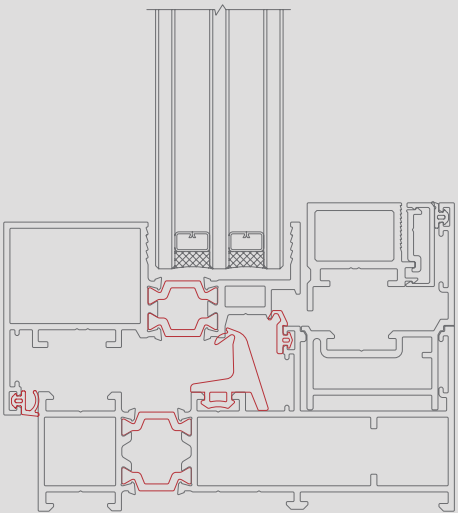


PRODUCT FEATURES

- Frame thickness is 108mm , installed with 18mm thickness PA66 High-strength nylon insulation strip.
- The width of trough for glass is 37mm, can be installed with build-in Venetian blind glass, or triple glass, enhance heat insulation and preservation, fly screen is made of stainless steel, effective mosquito control.
- The thickness of glazing sash visual is 50mm, mesh sash visual is 28mm, connected thought window frame corner joint, easy to manufacture and reduce sash material but enhance visual area and day-lighting rate.
- The glazing sash and fly screen sash can be opened inward independently, the handle is installed on sash side, can' t be seen in the front, nice appearance.
- Hardware adopts HOPO, safe and durable.



PRODUCT STRUCTURE



PRODUCT PARAMETERS

Aluminum Profile Specification	Exterior Frame Height 48mm	Exterior Frame Width 108mm
	Window Sash Height 50mm	Window Sash Width 77mm
Wall Thickness	Exterior Frame 1.6mm	Window Sash 1.6mm
Material Characteristic	11.7Kg/m ²	
Standard Glass	6mm+20A+6mm	
Opening Pattern	Glazing Sash & Mesh Sash Both Inward	

L6

sound insulation

L9

resistance to wind

L8

air tightness

L6

water tightness

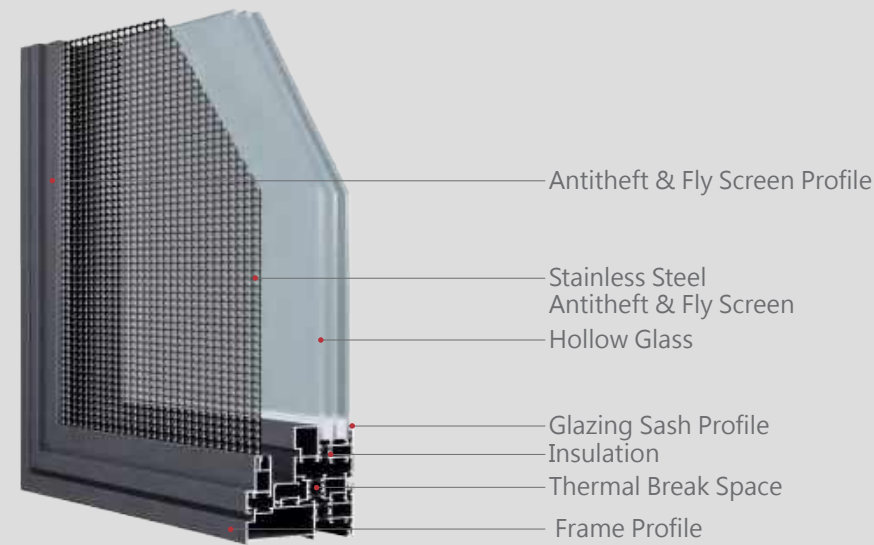
L6

thermal insulation

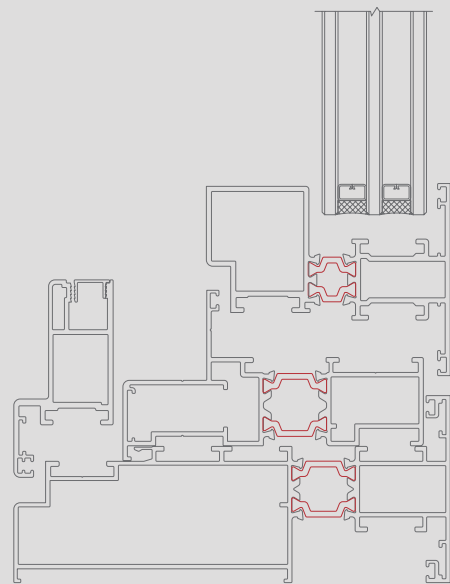


NAWD138

Integrated Thermal Break Window With Mesh Series



PRODUCT STRUCTURE



PRODUCT FEATURES

- Standard width of outer frame is 138mm, which is equipped with 20mm PA66 high-strength nylon heat-insulation strip.
- The width of glass sash is 25mm and width of mesh sash is 62mm. The frame parts are connected by brackets. The window is easy to assemble. The design minimize the sash width to increase the visible glass area, thus more light comes through the window making the room brighter.
- The width of trough for glass is 41mm. It' s available with built-in louver , triple glass and etc., which improves the heat insulation and thermal performance. The glass beads are connected at 45 ° by removable bracket. After assembly, the window look seamless, neat and nice.
- The sash parallels with the outer frame , therefore it looks neat, smooth and nice. The space distance between the mesh and glass is 29.6mm, in which you can consider installing a grille for safety and protection.
- The brand of the hardware we use is HOPO, which is the top brand in Shenzhen, famous for its quality, durability and safety.

PRODUCT PARAMETERS

Aluminum Profile Specification	Exterior Frame Height 58.9mm	Exterior Frame Width 138mm
	Window Sash Height 60.5mm	Window Sash Width 77mm
Wall Thickness	Exterior Frame 1.4mm	Window Sash 1.6mm
Material Characteristic	14.8Kg/m ²	
Standard Glass	5mm+27A+5mm	
Opening Pattern	Glazing Sash Outward, Screen Inward	

L6

sound insulation

L9

resistance to wind

L8

air tightness

L6

water tightness

L6

thermal insulation



NAWD120

High-Pressure Sealing Sliding Window Series

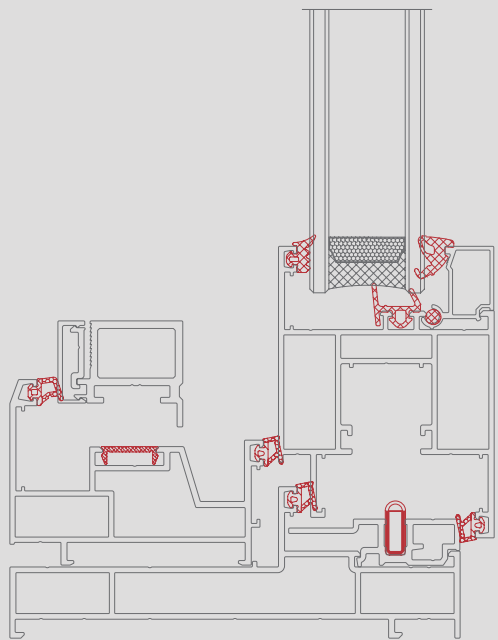


PRODUCT FEATURES

- Standard width of outer frame is 119mm and thickness of aluminum is 1.5mm.
- Special rubber sealing strip structure effectively increase the sealing tightness of the window and doesn't take up any space of the room, which achieves the standard of sliding window system.
- The window is together with mesh screen to prevent mosquitoes, insects, mouse, ants from coming in the room. In addition, opening inward or outward is optional.
- Width of trough for glass is 39mm. It's available with built-in louver, triple glass and etc. Which enhances thermal insulation performance. The glass sash parts are connected by removable brackets. It's also easy to assemble.
- The brand of the hardware we use is HOPO, which is the top brand in Shenzhen, famous for its quality, durability and safety.



PRODUCT STRUCTURE



PRODUCT PARAMETERS

Aluminum Profile Specification	Exterior Frame Height 40mm	Exterior Frame Width 119mm
	Window Sash Height 77mm	Window Sash Width 57mm
Wall Thickness	Exterior Frame 1.5mm	Window Sash 1.4mm
Material Characteristic	11.5Kg/m ²	
Standard Glass	5mm+25A+5mm	
Opening Pattern	Sliding Glass Sash+Mesh Sash Inward , Sliding Glass Sash+Mesh Sash Outward	

L4

sound insulation

L8

resistance to wind

L7

air tightness

L5

water tightness

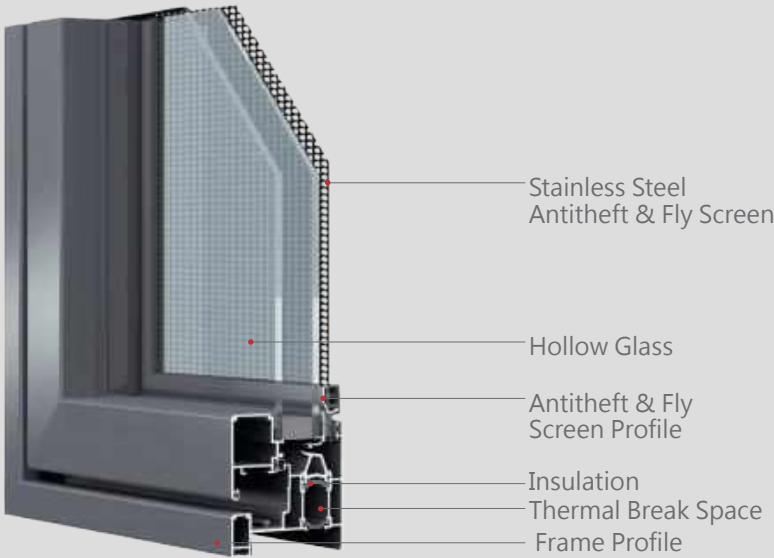
L3

thermal insulation

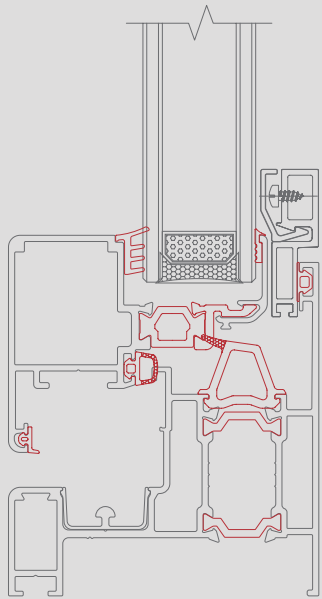


NAWD-A-80

Heat Insulated Inverted Sliding Window Series



PRODUCT STRUCTURE



PRODUCT FEATURES

- Unique opening style, frame and sash at same flatness which makes it a new design. It can be opened in tilt-turn, sliding, and inward casement style.
- Single-rail staggered sliding opening style, the sash and frame are at same flatness window is closed. That’ s why its sealing performance is much better than normal casement structure.
- The movable window sash is large and it doesn’ t occupy indoor space. The invisible-design sash make it looks similar to curtain wall when it’ s closed. The hardware installed hidden inside make it nice and neat.
- The window is equipped with casement inward-open screen mesh to prevent mosquitoes, insects, mouse, ants from coming in. It’ s safe and easy to operate.
- Its structure and performance reaches international standard. Therefore it can satisfy different high standard construction requirements.

PRODUCT PARAMETERS

Aluminum Profile Specification	Exterior Frame Height 86mm	Exterior Frame Width 80mm
	Window Sash Height 56mm	Window Sash Width 66.7mm
Wall Thickness	Exterior Frame 1.6mm	Window Sash 1.6mm
Material Characteristic	11.4Kg/m ²	
Standard Glass	5mm+20A+5mm	
Opening Pattern	Inward Casement, Inward Casement Tilt Turn, Tilt Turn Sliding, Tilt Turn	

L6

sound insulation

L8

resistance to wind

L8

air tightness

L5

water tightness

L6

thermal insulation

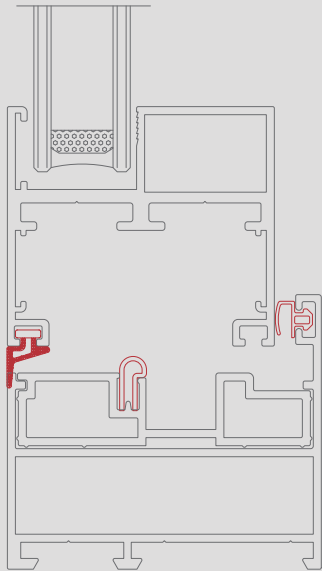


NAWD50

Narrow Frame Folding Window Series



PRODUCT STRUCTURE



PRODUCT FEATURES

- The frame and sash are connected by 45° hinge. The specification of sash is 50X45mm. The narrow-frame design not only saves materials but also increases the visible area in order to meet the market demand.
- “1 + 0” , “2 + 1” , “2 + 2” , “3 + 1” and other collocation are available. The width of slot for glass is 20.5mm, so thickness of glass is flexible and customized to meet different customers’ requirements.
- The upper rail is hanging rail and the lower rail is stainless steel rail which has high weight bearing capacity. That’ s why it’ s durable, smooth to push and pull and not easy to discolor.
- The door sash is installed with invisible hinges and is sealed with rubber strips all around it, which not only makes the line of product smooth and nice, but also significantly improves its anti-vibration and noise-insulation performance.
- Suitable for villas, high-end residences, commercial residential buildings, office buildings and other premises that requires large areas of opening space.

PRODUCT PARAMETERS

Aluminum Profile Specification	Exterior Frame Height 50.4mm	Exterior Frame Width 58.8mm
	Window Sash Height 44.5mm	Window Sash Width 50mm
Wall Thickness	Exterior Frame 1.5mm	Window Sash 1.5mm
Material Characteristic	7.4Kg/m ²	
Standard Glass	5mm+9A+5mm	
Opening Pattern	Collocation 321, 330, 440, 431, 422 and etc.	

L4

sound insulation

L8

resistance to wind

L6

air tightness

L5

water tightness

L3

thermal insulation

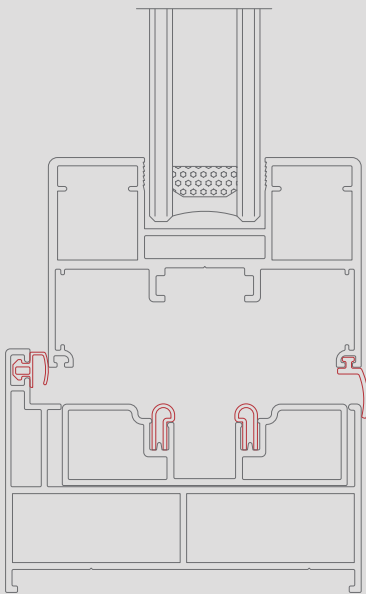


NAWD68

Narrow Frame Folding Door Series



PRODUCT STRUCTURE



PRODUCT FEATURES

- The frame and sash are connected by 45 ° hinge. The specification of sash is 68X46mm. The narrow-frame design not only saves materials but also increases the visible area in order to meet the market demand.
- “1 + 0” , “2 + 1” , “2 + 2” , “3 + 1” and other collocation are available. The width of slot for glass is 26mm, so thickness of glass is flexible and customized to meet different customers’ requirements.
- The lower rail is available with high-sill rail or normal rail as options. It's equipped with stainless steel double-rail which enable it with high weight bearing capacity and durability and make it smooth and easy to slide, and hard to discolor.
- The door sash is installed with invisible hinges and is sealed with rubber strips all around it, which not only makes the line of product smooth and nice, but also significantly improves its anti-vibration and noise-insulation performance.
- Suitable for villas, high-end residences, commercial residential buildings, office buildings and other premises that requires large areas of opening space.

PRODUCT PARAMETERS

Aluminum Profile Specification	Exterior Frame Height 53mm	Exterior Frame Width 77.3mm
	Window Sash Height 45.6mm	Window Sash Width 68mm
Wall Thickness	Exterior Frame 1.5mm	Window Sash 1.5mm
Material Characteristic	9.7Kg/m²	
Standard Glass	5mm+12A+5mm	
Opening Pattern	Collocation 321, 330, 440, 431, 422 and etc.	

L4

sound insulation

L8

resistance to wind

L6

air tightness

L5

water tightness

L3

thermal insulation

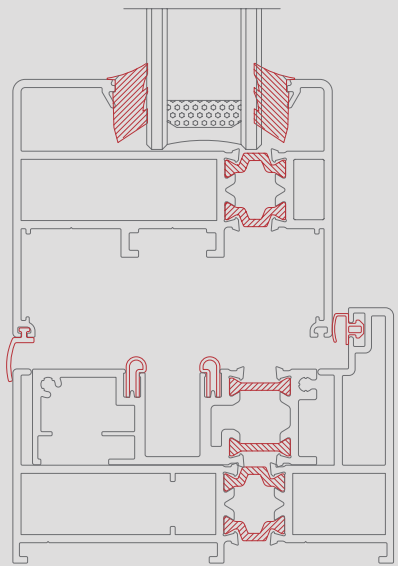


NAWD-B-80

Thermal Break Folding Door Series



PRODUCT STRUCTURE



PRODUCT FEATURES

- The standard of the outer frame of this series is 93mm. We adopt 14.8mm PA66 high-strength nylon heat insulation strip. The frame and the glass are connected by 45 ° hinge. Therefore it's simple and fast to assemble and it's easy and convenient to operate.
- For this series, it can be made into "1+0", "2+1", "2+2", "3+1" and other collocation. The width of slot for glass is 42mm, which can be equipped with triplex glass to improve thermal insulation performance.
- The lower rail is stainless steel double rail, which has high weight bearing capacity. It's durable and smooth to push and pull, not easy to discolor.
- The door sash is equipped with invisible hinges and is sealed with rubber strips all around it, which not only makes the line of product smooth and nice, but also significantly improves its anti-vibration and anti-noise performance.
- This series is suitable for villas, high-end residential, commercial and residential buildings, office buildings, especially for high-end buildings with environmental-protection and energy-saving requirements.

PRODUCT PARAMETERS

Aluminum Profile Specification	Exterior Frame Height 62.6mm	Exterior Frame Width 93mm
	Window Sash Height 63.2mm	Window Sash Width 78mm
Wall Thickness	Exterior Frame 2.0mm	Window Sash 2.0mm
Material Characteristic	12.1Kg/m ²	
Standard Glass	5mm+27A+5mm	
Opening Pattern	Collocation 321, 330, 440, 431, 422 and etc. All are electrical.	

L5

sound insulation

L9

resistance to wind

L6

air tightness

L5

water tightness

L5

thermal insulation



NAWD115

Extra Narrow Frame Sliding Door Series

PRODUCT STRUCTURE



PRODUCT PARAMETERS

Aluminum Profile Specification	Exterior Frame Height 35mm	Exterior Frame Width 115mm
	Window Sash Height 16mm	Window Sash Width 45mm
Wall Thickness	Exterior Frame 1.35mm	Window Sash 2.0mm
Material Characteristic	3.9Kg/m ²	
Standard Glass	6mm · 5mm+12A+5mm	
Opening Pattern	Single-rail, double-rail, triple-rail, triple-linkage	

L3

sound insulation

L6

resistance to wind

L4

air tightness

L3

water tightness

L2

thermal insulation

PRODUCT FEATURES

- Width of single-rail is 58mm. Width of double-rail is 115mm. Width of triple-rail is 172mm.
- The upper rail is available with buffer wheels, hanging rails and other designs to meet different requirements. The triple-rail have a unique triple-linkage opening style, which make it easier to open and the opening area larger, so that the user will have a comfortable and delightful experience.
- We use 90 ° screws for connection. Lower rail is equipped with stainless steel rail. It’ s very smooth to push and pull. Sealing of the edge side is finished with special covers to make it look seamless and aesthetically pleasing.
- The size of the sash is 16x45mm, which optimizes minimalism to the best, allowing light to penetrate into the room freely. It gives people a feeling of comfortably simple and neat.
- We use OPEC brand hardware accessories. Making it safe, reliable and durable is the most important.

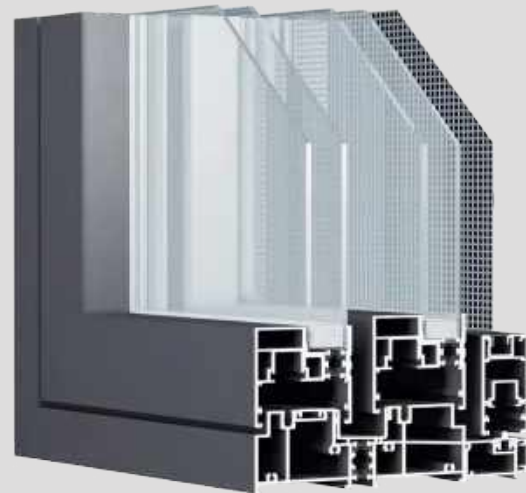


NAWD143

Narrow Frame Lifting Sliding Door Series



PRODUCT STRUCTURE



PRODUCT PARAMETERS

Aluminum Profile Specification	Exterior Frame Height 23.5mm	Exterior Frame Width 143mm
	Window Sash Height 56mm	Window Sash Width 64mm
Wall Thickness	Exterior Frame 1.6mm	Window Sash 1.5mm
Material Characteristic	7.8Kg/m ²	
Standard Glass	6mm+12A+6mm	
Opening Pattern	double-rail, triple-rail	



sound insulation



resistance to wind



air tightness



water tightness



thermal insulation

PRODUCT FEATURES

- The standard width of the outer frame is 143mm, equipped with 143mm PA66 high-strength nylon heat insulation strip.
- The materials can be applied to sliding window and lifting sliding door, sealed with rubber strip which offers excellent airtight and watertight performance. We adopt stainless steel rail. It's durable, smooth to slide and the color is not easy to fade.
- The visible part of sash profile is 56mm with 45° cutting connection which increases the visible area and the lighting rate. That makes the appearance look graceful and aesthetically delightful, wins high appreciation among our customers.
- The materials can be used for double-rail or triple-rail sliding with mesh. The mesh is installed at the last step, also called last-entering. After installation, the overall width is 188mm. The mesh can be installed inside or outside the door, it depends on different customers' requirements.
- We use Haobo brand hardware and accessories because it's important to make the door safe, reliable and durable.



NAWD184

Panoramic Sliding Door Series

PRODUCT STRUCTURE



PRODUCT PARAMETERS

Aluminum Profile Specification	Exterior Frame Height 65.8mm	Exterior Frame Width 184mm
	Window Sash Height 28mm	Window Sash Width 78mm
Wall Thickness	Exterior Frame 2.0mm	Window Sash 2.0mm
Material Characteristic	8.5Kg/m²	
Standard Glass	6mm+9A+6mm	
Opening Pattern	double-rail, All are electrical.	

L5

sound insulation

L9

resistance to wind

L7

air tightness

L5

water tightness

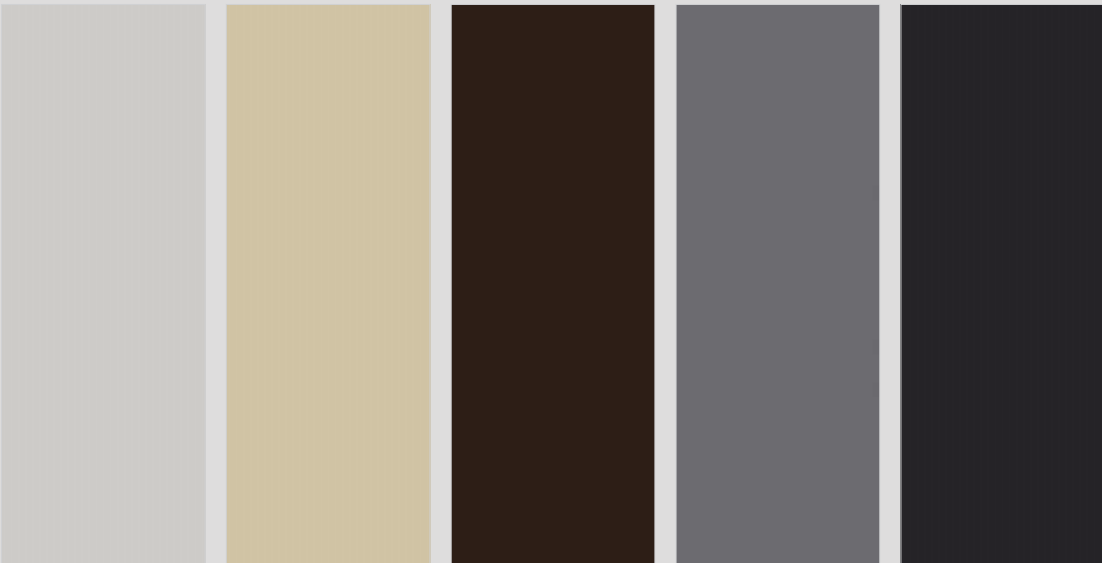
L5

thermal insulation

PRODUCT FEATURES

- The standard width of the outer frame is 184mm. We adopt 20mm PA66 high-strength nylon heat insulation strip.
- The visible sash is 28mm, connected at 45 ° cutting . The way the sash is concealed pushes the minimalism to the best, which greatly increase the visible area and has a nice and neat appearance.
- Lower rail has two types: flat rail and high rail. High lower rail can effectively prevent the outdoor water from flowing indoor. It meets the waterproof requirements especially in coastal and rainy countries and regions.
- Lower rail is equipped with stainless steel rail, while upper rail has positioning wheel. The sash is double-wheel structure. The door is smooth to slide, anti-sway,anti-vibration. The rail also has high weight bearing capacity. It can be applied to large-area panoramic glass sliding door.
- We use Kaisenberg brand hardware and accessories which is safe, reliable and durable.

COLOR CONFIGURATION



Light Champagne Light Ti Gold Sandblasting Light Brown Sandblasting Grey Sandblasting Black Sandblasting

HARDWARE CONFIGURATION



Silver Handle 1 Golden Handle 1 Silver Handle 2 Golden Handle 2

FOSHAN NAVIEW NEW BUILDING MATERIALS CO., LTD.
WhatsApp/Tel/WeChat: +86-13724959460